

amfeltec™



Squid
CARRIER BOARD™
FAMILY



Squid Carrier Board™ Family

Our *Squid* PCIe Family is a series of PCIe carrier boards designed for desktop computers, servers, embedded appliances and storage expansion.

- *Squid* Carrier Boards expand a motherboard's PCIe slot with multiple modules of different form factors and interfaces.
- Our patented architecture is unique: the carrier board is located in the **middle** of the PCIe slot. This facilitates efficient allocation of modules on both sides of the board.

Key Characteristics of All *Squid* Carrier Boards

Motherboard agnostic

Compatible with any motherboard on the market

Easy "Plug & Play" installation

No drivers required

PCIe connector agnostic

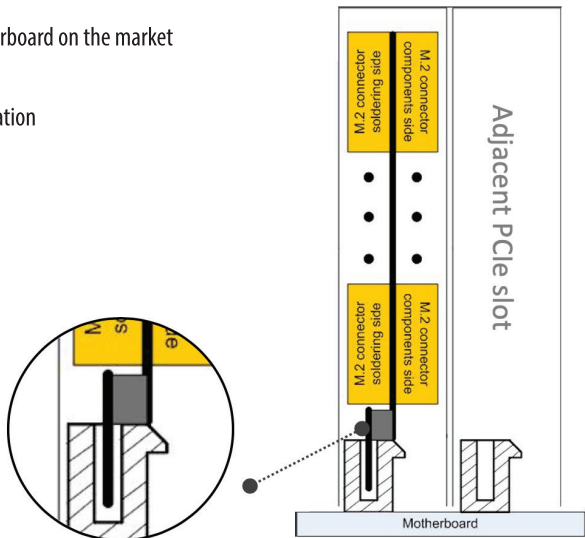
Upstream connection via interchangeable adaptor (x1, x4, x8, x16)

RoHS compliant

Environmentally friendly

Variety of sizes

1U, 2U and full-size



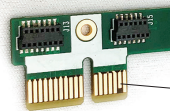
SKU-086-31
SKU-086-31U

1U

1 M.2 PCIe SSD



PCIe Retainer holds the carrier board inside 1U chassis without a bracket



x4 PCIe upstream adapter

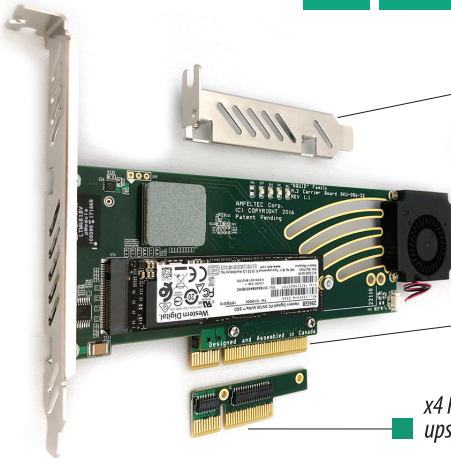
x1 PCIe upstream adapter (optional)

- Supports M.2 PCIe SSD sizes: 2242, 2260, 2280 and 22110 (M-key)
- Length: 4.67 in (118.70 mm)

2U

2 M.2 PCIe SSD

SKU-086-32



Half-height bracket

x8 PCIe Gen 3 upstream adapter

x4 PCIe Gen 3 upstream adapter

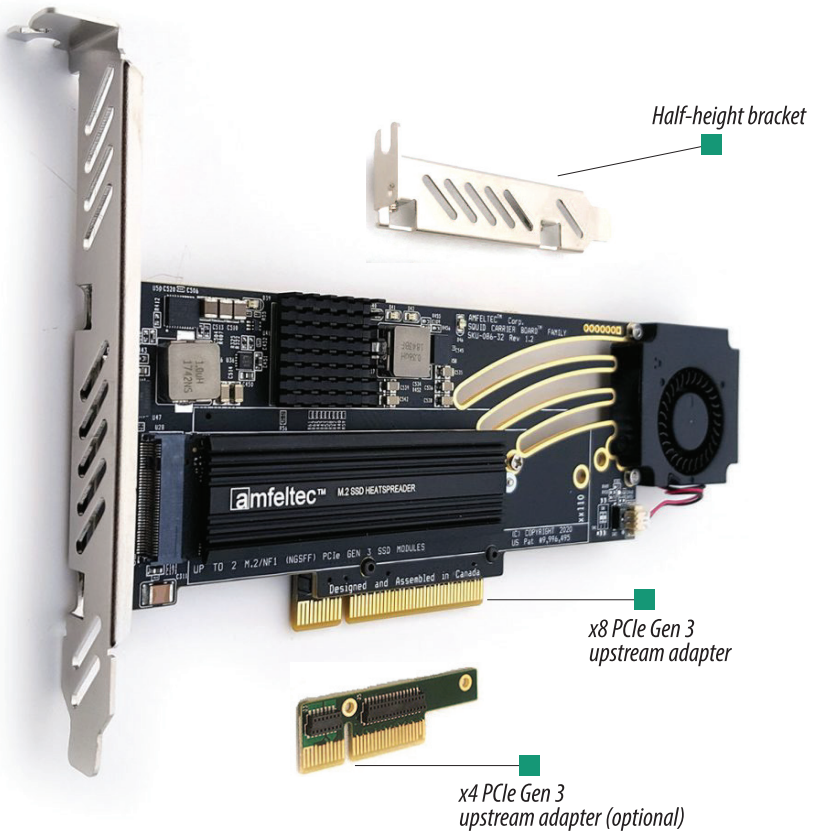
- Compatible with any motherboard
- Supports up to two (2) M.2 PCIe SSD modules: 2242, 2260, 2280 and 22110 (M-key)
- Easily removable cooling fan
- Length: 7 in (178 mm) with fan; 5.51 in (140 mm) without fan

Squid Carrier Board™ Family

SKU-086-32e

2U

2M.2 / NGFF(NF1) PCIe SSD



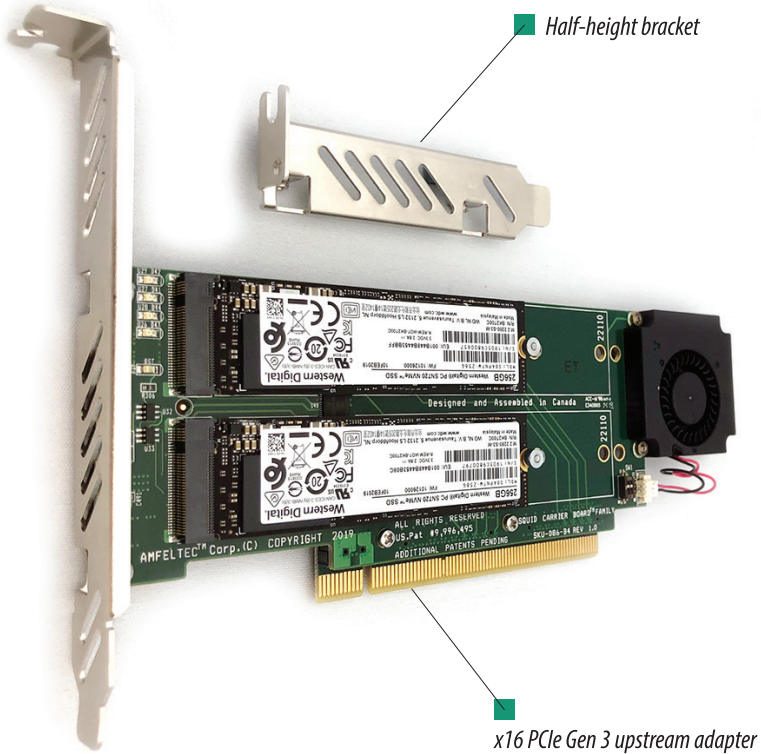
- Compatible with any motherboard
- Supports up to two M.2 PCIe SSDs: 2242, 2260, 2280 and 22110; or NGFF (NF1) SSD
- Lengths up to 110 mm; widths up to 32 mm (M-key)
- Easily removable cooling fan
- Length: 7 in (178 mm) with fan; 5.51 in (140 mm) without fan

SKU-086-B4

2U

4 M.2 PCIe SSDs

Cost Effective



- Requires PCIe bifurcation support from motherboard (x4/x4/x4/x4)
- Supports up to four (4) M.2 PCIe SSDs: 2260, 2280 and 22110
- Easily removable cooling fan
- Dimensions: 176 mm x 65 mm with a fan; 142 mm x 65 mm without a fan

Squid Carrier Board™ Family

SKU-086-34

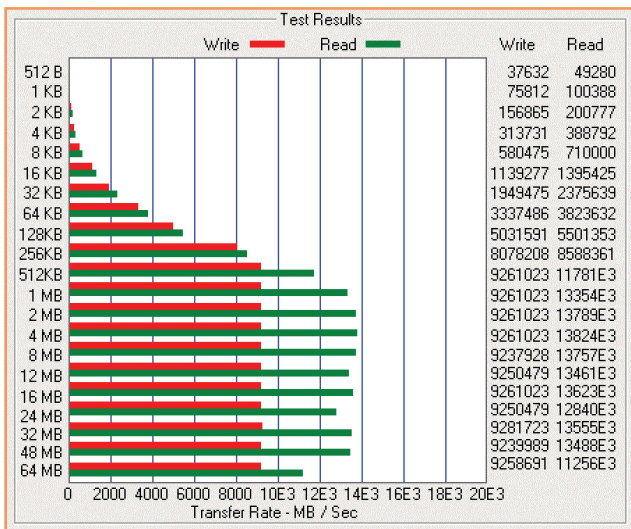
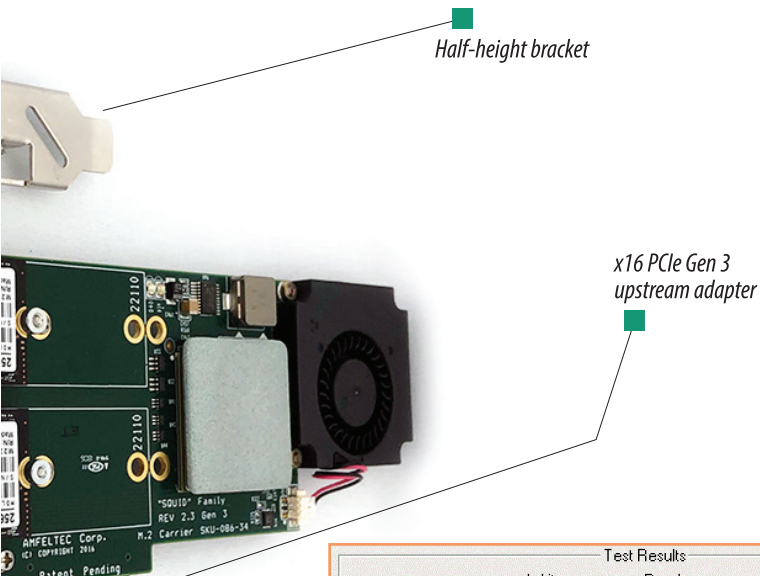
x8 PCIe Gen 3
upstream adapter (optional)



- Compatible with any motherboard
- Supports up to four (4) M.2 PCIe SSDs: 2230, 2242, 2260, 2280 and 22110
- Easily removable cooling fan
- Length: 8.23 in (209 mm) with a fan; and 6.81 in (174 mm) without a fan

2U

4 M.2 PCIe SSDs



Squid Carrier Board™ Family

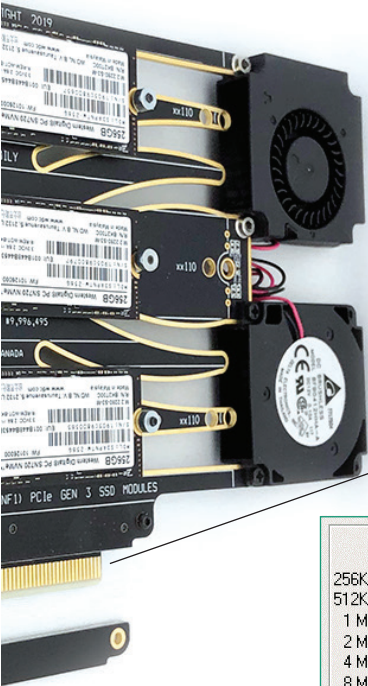
SKU-086-36

x8 PCIe Gen 3
upstream adapter (optional)

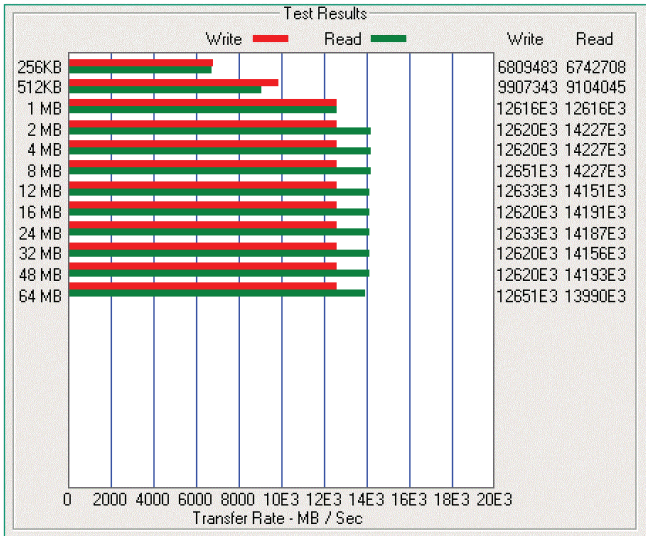


- Compatible with any motherboard.
- Supports up to six (6) M.2 PCIe Gen 3 / NGSSFF (NF1) SSDs:
lengths 80 mm & 110 mm, and widths up to 32 mm (M-key)
- Easily removable cooling fan
- Dimensions: 202.65 mm x 111.15 mm with fans;
and 167.55 mm x 111.15 mm without fans

6 M.2 PCIe SSDs

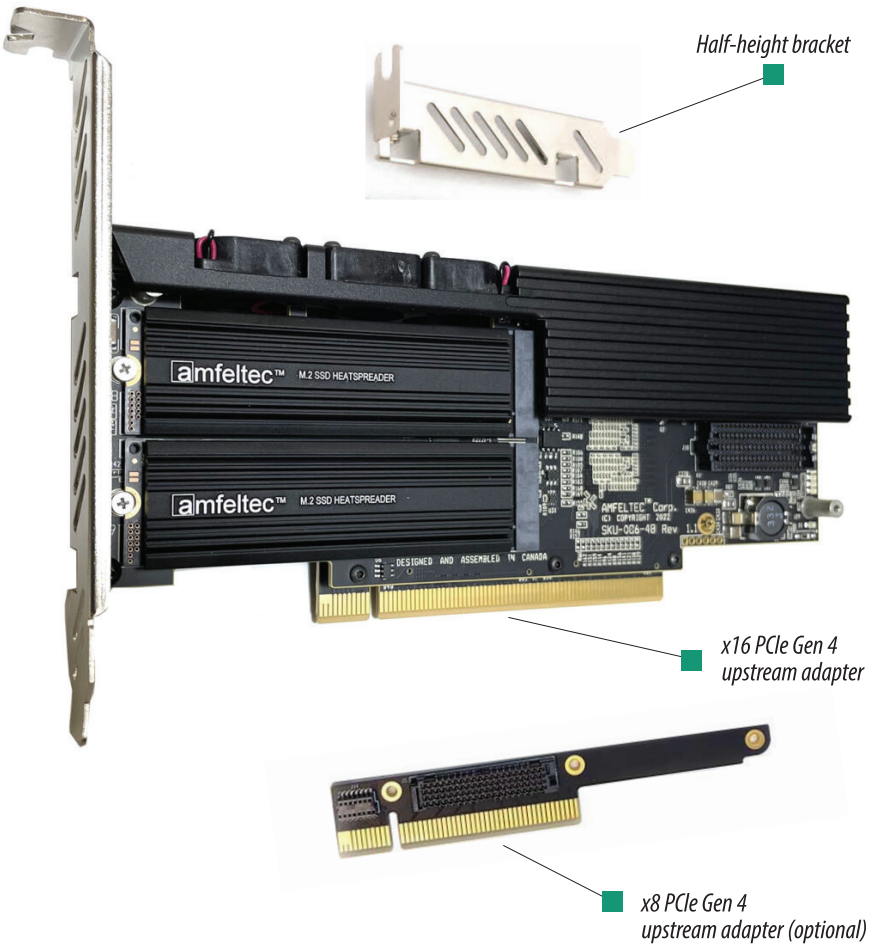


x16 PCIe Gen 3 upstream adapter



Squid Carrier Board™ Family

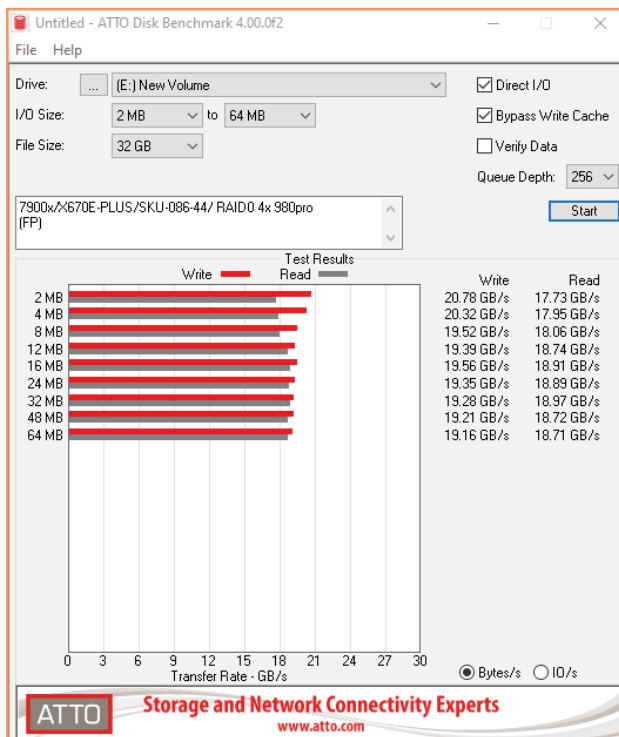
SKU-086-44



- Unique half-height (2U), half-length PCIe Gen 4 carrier board
- Compatible with any motherboard
- Supports up to four (4) M.2 PCIe Gen 4 2280 SSDs (M-key)
- Dimensions: 168 mm x 69 mm

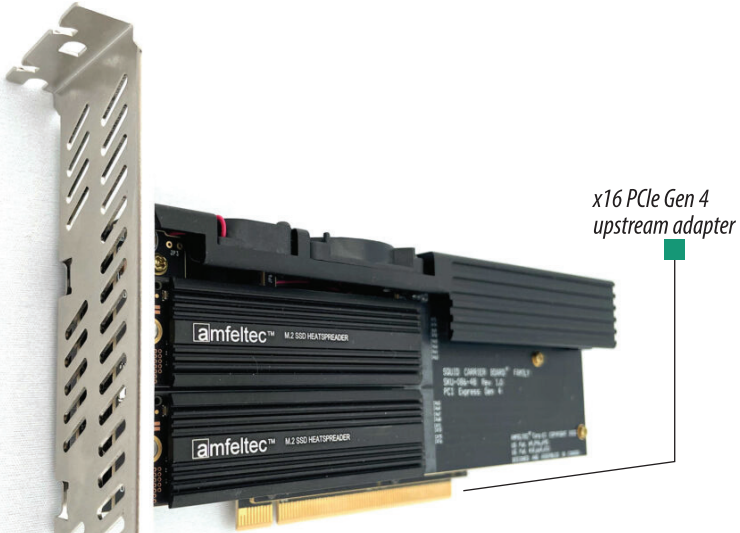
2U

4 M.2 PCIe SSDs



Squid Carrier Board™ Family

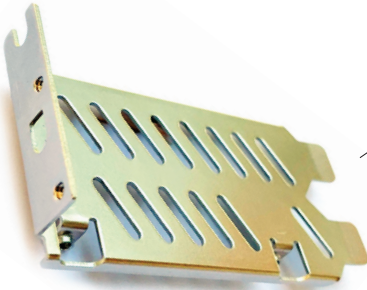
SKU-086-48



- Unique half-height (2U), half-length PCIe Gen 4 carrier board.
- Compatible with any motherboard
- Supports up to eight (8) M.2 PCIe Gen 4 2280 SSDs (M-key)
- Dimensions: 168 mm x 69 mm x 35 mm, double-slot PCIe board

2U

8 M.2 PCIe SSDs



Half-height bracket

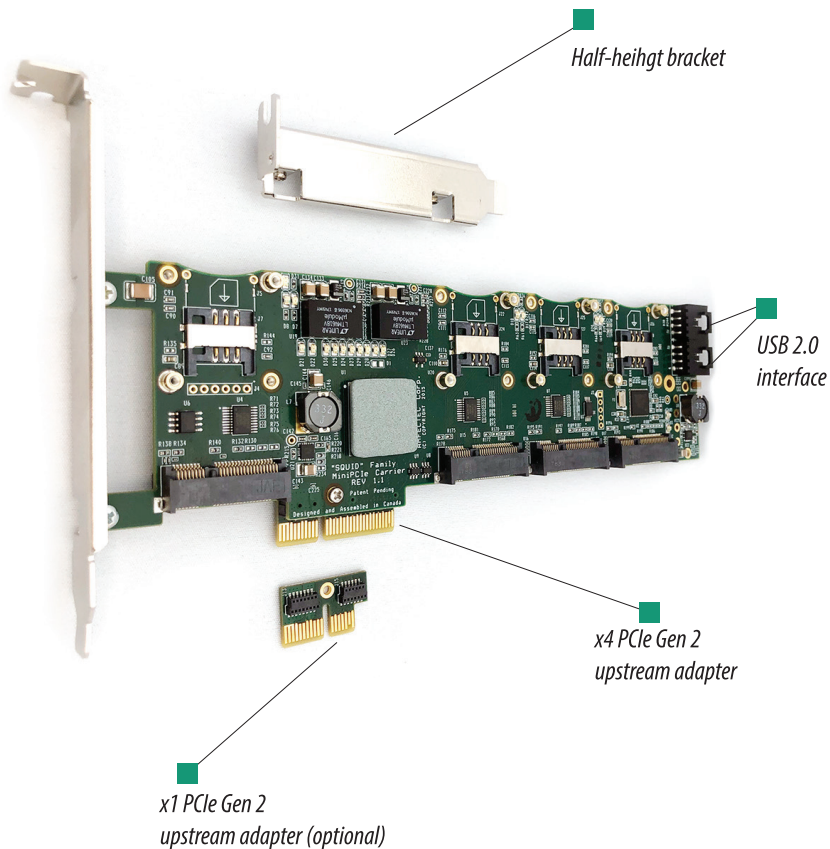


Top View

Squid Carrier Board™ Family

SKU-085-01
SKU-085-02
SKU-085-03

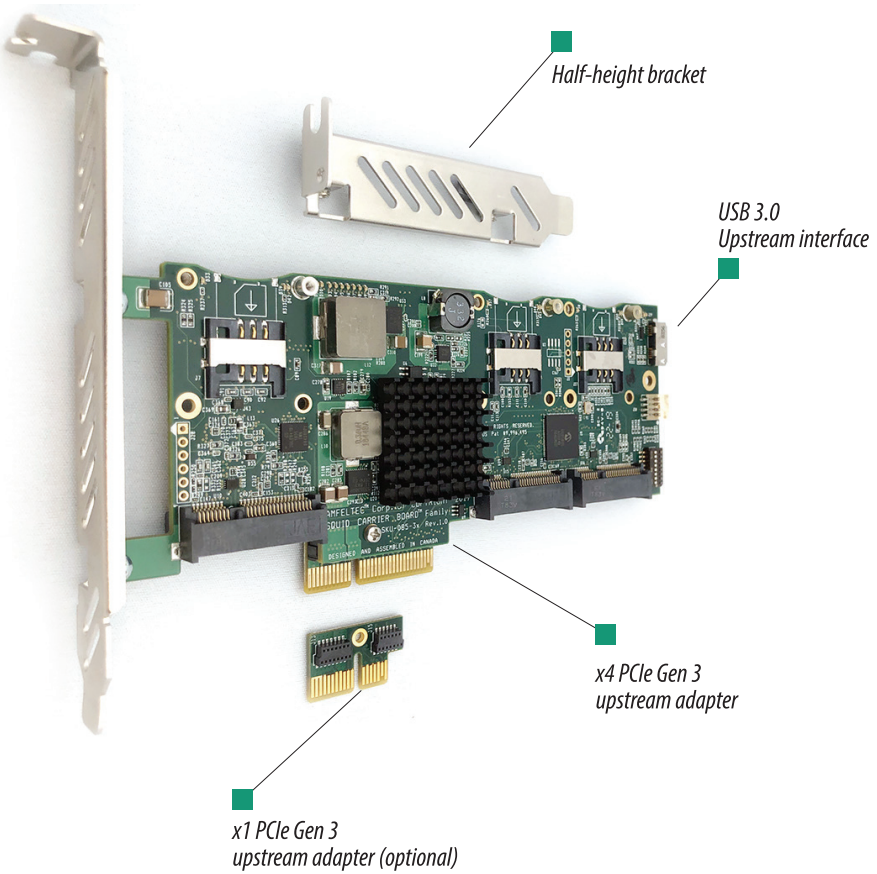
2U 8 MiniPCIe modules



- Supports up to eight (8) MiniPCIe modules
- Supports PCIe Gen 2, USB 2.0 and SIM interfaces for each of its MiniPCIe circuits
- Dimensions: 208 mm x 68 mm

SKU-085-31
SKU-085-32

2U | **6 MiniPCle modules**



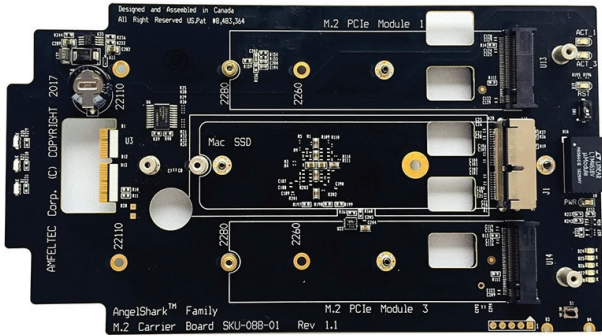
- Supports up to six (6) MiniPCle modules
- Supports PCIe Gen 3, USB 3.0 and SIM interfaces for each of its 6 MiniPCle modules
- Dimensions: 162 mm x 68 mm

AngelShark Carrier Board™

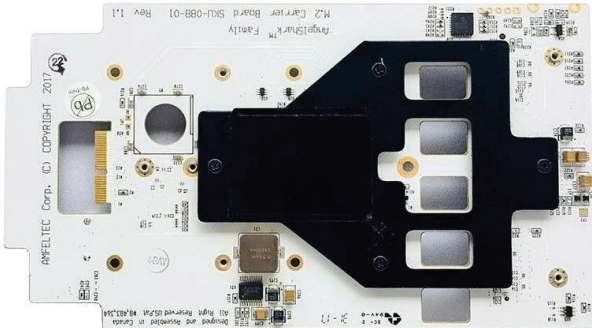
SKU-088-01



- Expands Mac Pro storage capacity
- Designed for and **located inside** your Mac Pro (Late 2013) cylinder
- Easy Plug-and-Play installation
- Allows you to **add up to two** M.2 PCIe SSD modules (M-key)



Top side



Bottom side

About Us

Amfeltec Corporation is a leading Canadian designer and manufacturer of complex and innovative electronics solutions, based in Stouffville, Ontario.

Our product lines include:

- system monitoring and crash recovery products
- carrier boards (SSD, wireless, video)
- telecommunication solutions
- SSD boards
- computer hardware expansion products
- testing, debugging and production tools

Amfeltec places a special focus on high-speed inter-connectivity technologies.

Since its incorporation in 2005, *Amfeltec* has served various customer segments, ranging from small businesses and individual consumers to multinational corporations and government agencies, including the defence industry and electronics companies specializing in the development of high-performance, custom-built computer systems.

Amfeltec's multi-decade industry experience, engineering expertise, innovation track record, and a diverse product portfolio make the company a solution provider of choice for many enterprises worldwide.

Notable *Amfeltec* product families include *Squid Carrier Board*(™), *Piranha USB Telecom Adapter*(™), *Arowana PCIe SSD Board*(™), *AngelShark Carrier Board*(™) and *PocketShark*(™) Batteryless System Loggers.

Most of our products are covered by one or more United States patents.

All our products are designed and manufactured in Canada.



 Designed and Manufactured in Canada

This product may be covered by one or more of the following U.S. patents:
7,186,145; 7,255,570; 7,537,491; 7,850,475; 7,908,504; 8,351,583; 8,483,364; 9,996,495;
10,481,660; 10,664,431.

Other U.S. patents pending

Amfeltec Corporation / 4129 Jesse Thomson Road
Stouffville / Ontario / L4A 3V5 / Canada
www.amfeltec.com