

Squid PCI Express Gen3 Carrier Board for up to 6 M.2 or NGFS(NF1) modules.

Features:

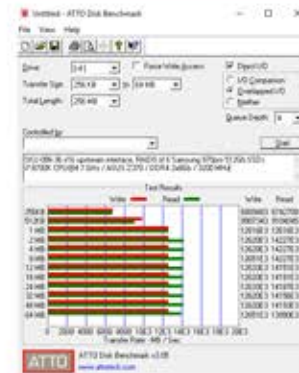
- Easy "Plug and Play" installation. No drivers needed.
- Doesn't use PCI Express bifurcation; operates on any motherboard.
- Supports up to 6 M.2 or NGFS(NF1) PCI Express add-in modules (M-key) (3 modules on the top and 3 modules on the bottom side).
- Supports x16 or x8 PCI Express Gen3 (8.0 Gbps) upstream connection by exchangeable PCI Express adapters.
- x4 PCI Express Gen3 (8.0 Gbps) connection to each M.2 / NGFS(NF1) module.
- Supports 80 mm and 110 mm length and up to 32 mm wide modules.
- Occupied one standard PCI Express slot.
- Real-time performance and temperature monitoring via USB connection.
- Easy removable cooling fans; fan speed control.
- Dimensions:
 - Without cooling fans - 111.15 mm x 167.65 mm (full-height, half-length PCI Express board)
 - With cooling fans - 111.15 mm x 202.65 mm.
- RoHS-compliant.

Amfeltec continues to expand the *Squid* Family product line by introducing a new PCI Express Carrier Board (SKU-086-36) that supports up to 6 standard M.2 or NGFS(NF1) modules. This Carrier Board is based on the same patented concept that allows modules to be placed on both sides of the Carrier Board and occupies one standard PCIe slot without violating PCI Express specification.

The upstream PCI Express connection from the Carrier Board to the motherboard is done via exchangeable x16 or x8 PCI Express adapters. Using replaceable PCI Express adapters allows the Carrier Board to be inserted into x16 and x8 PCI Express motherboard connectors without encountering the well-known limitations.

The Carrier Board implements real-time performance and temperature monitoring, while uploading this information to the host computer via a USB cable connection.

Speed test results:



(RAID of 6 Samsung 970pro M.2 modules)

